

# Announcement

## 7th FLUXONICS RSFQ design workshop

Engineering single-flux-quantum microelectronics

09-26/2011 - 09-28/2011

The workshop is directed to those who want to get familiar with aspects of design and simulation of superconductive electronic circuits and the development of emerging applications.



Organizing Committee

FLUXONICS Foundry  
European Design Center for Superconducting Electronics  
Ilmenau University of Technology  
RSFQ design group  
Prof. Dr. Hannes Töpfer



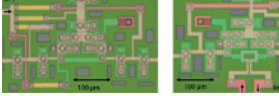
## Registration

Registration via email is preferred and encouraged.

Applications and all other correspondence concerning the workshop should be addressed to:

Prof. Dr. Hannes Töpfer  
Ilmenau University of Technology  
Institute of Information Technology  
P.O. Box 100 565  
D-98684 Ilmenau/Germany  
Tel: +49 3677 69 2630  
Fax: +49 3677 69 1152  
hannes.toepfer@tu-ilmenau.de





# Agenda

The aim of the workshop is to discuss recent developments and future activities in the field of RSFQ (Rapid Single Flux Quantum) design with particular emphasis on the translation of scientific knowledge into industrial needs.

## 09-25/2011 | Sunday

- Arrival / check-in and social event

## 09-26/2011 | Monday

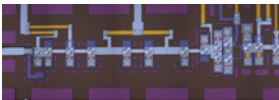
- Superconductive Electronics (SE) lectures, introduction to the single flux quantum technique, circuit design and testing
- This first part is devoted to teaching the nature of RSFQ technique and how to design superconducting devices

## 09-27/2011 | Tuesday

- Oral presentations related to several technical issues and scientific aspects of SE design, such as: signal sensing, high throughput interfacing, new circuit concepts

## 09-28/2011 | Wednesday

- EDA tools for RSFQ circuit design



# Travel Information

Ilmenau is a small German city located 200 km east from Frankfurt and 300 km south from Berlin.

## Arrival by plane / via Frankfurt, Berlin or Leipzig:

Take a train to Erfurt and one of the connecting trains to Ilmenau main station (Hauptbahnhof/Hbf.). Train time tables: <http://www.bahn.de>

The hotels and the campus are within a 10-15 min walking distance from the train station.

**Hotels:** <http://www.hotel-tanne-thueringen.de>  
<http://www.hotel-lindenhof.de>

The workshop will take place at the IBZ on the University Campus in Ilmenau.

**More travel information including a campus map will be provided after the registration process.**

